

ACCOMMODATION

AMERICAN RIVER

Kangaroo Island Lodge - motel
Two rooms for disabled persons
Telephone: 1800 355 581

Nepean Bay Getaway - self contained house
Disabled friendly
Telephone: 08 8553 9181

BAUDIN BEACH

The Beach House - self contained house
Wheel chair access
Not equipped with handrails in bathroom
Telephone: 08 8331 1841

EMU BAY

Seascape on Emu Bay - bed and breakfast
870mm wide doors, access ramp, disabled facilities.
Telephone: 08 8553 5199

NORTH COAST

Lathami Lodge - self contained
Disabled bathroom: shower, toilet & basin
Wheelchair access friendly house
Telephone: 08 8826 2097

KINGSCOTE

Acacia Apartments
Offers full disabled facilities
Telephone: 1800 247 007

ACCOMMODATION

KINGSCOTE - continued

The Lazaret - self contained house
Wide doorways, disabled toilet, shower
Telephone: 08 8553 2615

Correa Corner - bed and breakfast
"Willow Suite" has wide entrance and hand held shower head, normal shower suite, room to manoeuvre wheelchair but not equipped with hand grab bars etc.
Telephone: 08 8553 2498

Island Resort - motel
Two rooms for disabled
Telephone: 08 8553 2100

The Folly - self contained house
Access ramp, no steps inside, large bathroom, without rails
Telephone: 08 8553 2776

Wisteria Lodge - motel
One disabled room
Telephone: 08 8553 2707

PARNDANA

Ficifolia Lodge - self contained
Unit 4 - Deluxe Suite
Designed to be wheelchair friendly
Telephone: 08 8559 6104

Timber Creek Lodge
Minimal disabled facilities
Telephone: 08 8559 5000

ACCOMMODATION

PENNESHAW

Currawong Holiday Home
Wheelchair access
Not equipped with hand grab bars etc
Tel: 08 8332 5982

The Kona

Entrance has wheelchair access
Not equipped with hand rails etc
Tel: 08 8553 1163

Dudley Villa

Wide ramp and doorways, level
Disabled toilet, grab rails and shower
Tel: 08 8553 1331

SOUTH COAST

KI Wilderness Retreat
disabled rooms available
Tel: 1800 228 212

Stranraer Homestead-B & B
bathroom suitable
Tel: 08 8553 8235

Vivonne Bay Island Getaway
House ramp
Tel: 08 8558 2506

Blueseas Beach House-D'Estrees Bay
Fully disabled access, ramp and facilities
Tel: 08 8553 8268

FACILITIES & ATTRACTIONS

PENNESHAW

Gateway Visitor Information Centre

PENNESHAW PENGUIN CENTRE

disabled toilet at Lloyd Collins reserve

EMU RIDGE EUCALYPTUS DISTILLERY

Disbled access & toilets

FLINDERS CHASE

Remarkable Rocks boardwalk

Cape de Couedic boardwalk

Rocky River Information Centre

all have disabled toilets

ISLAND BEEHIVE

disabled toilet and access

KELLY HILL CAVES

Caves not accessible, but has disabled toilet

KINGSCOTE FORESHORE

disabled toilet (playground)

PARNDANA WILDLIFE PARK

disabled access and toilets

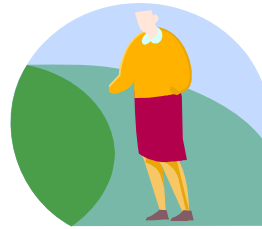
SEAL BAY

boardwalk and disabled toilets

STOKES BAY BUSH GARDEN

most of the garden accessible

no disabled toilets



**DISABILITY SERVICES
GUIDE**

Produced by the Gateway Visitor Information
Centre Penneshaw , details were correct
as at 5th Dec.07